

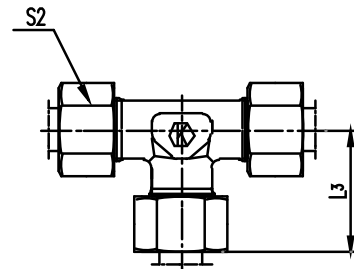
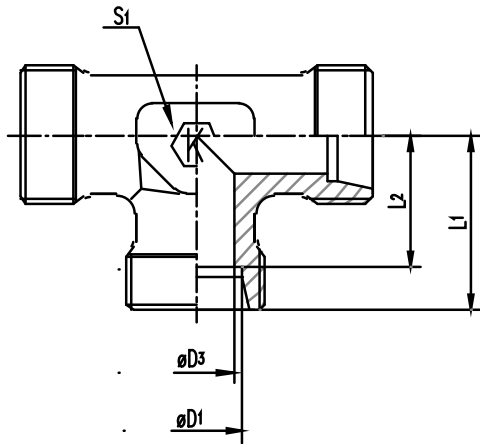
T Union Tee - 24° cone end

T T-Stutzen 24°-Anschluss

PREMOEM
PREMIUM HYDRAULIC SOLUTIONS - GERMANY

Order code without nut and cutting ring
XT...(X123....)

Order code with nut and cutting ring
T...(123....)



Series	Tube ØD1	D3	L1	L2	L3	S1	S2	Weight g/1 piece	ITEM CODE	ITEM NAME	PN (bar)
LL DB	4	3.0	15	11.0	21	9	10	14	123100404	T 04 LL	100
	6	4.5	15	9.5	21	9	12	17	123100606	T 06 LL	100
	8	6.0	17	11.5	23	12	14	26	123100808	T 08 LL	100
	10	8.0	18	12.5	24	12	17	25	123101010	T 10 LL	100
	12	10.0	21	15.0	27	14	19	32	123101212	T 12 LL	100
L NB	6	4.0	19	12.0	27	12	14	28	123200606	T 06 L	315
	8	6.0	21	14.0	29	12	17	32	123200808	T 08 L	315
	10	8.0	22	15.0	30	14	19	42	123201010	T 10 L	315
	12	10.0	24	17.0	32	17	22	55	123201212	T 12 L	315
	15	12.0	28	21.0	36	19	27	96	123201515	T 15 L	315
	18	15.0	31	23.5	40	24	32	142	123201818	T 18 L	315
	22	19.0	35	27.5	44	27	36	187	123202222	T 22 L	160
	28	24.0	38	30.5	47	36	41	316	123202828	T 28 L	160
	35	30.0	45	34.5	56	41	50	464	123203535	T 35 L	160
S YB	6	4.0	23	16.0	31	12	17	57	123300606	T 06 S	630
	8	5.0	24	17.0	32	14	19	64	123300808	T 08 S	630
	10	7.0	25	17.5	34	17	22	78	123301010	T 10 S	630
	12	8.0	29	21.5	38	17	24	108	123301212	T 12 S	630
	14	10.0	30	22.0	40	19	27	126	123301414	T 14 S	630
	16	12.0	33	24.5	43	24	30	176	123301616	T 16 S	400
	20	16.0	37	26.5	48	27	36	250	123302020	T 20 S	400
	25	20.0	42	30.0	54	36	46	456	123302525	T 25 S	400
	30	25.0	49	35.5	62	41	50	670	123303030	T 30 S	400
	38	32.0	57	41.0	72	50	60	1031	123303838	T 38 S	315

LL= very light series

L= light series

S= heavy series

PN (bar) = PN (MPa)

10

Zinc plated=Cr(VI)-free